



★ AI-generated content

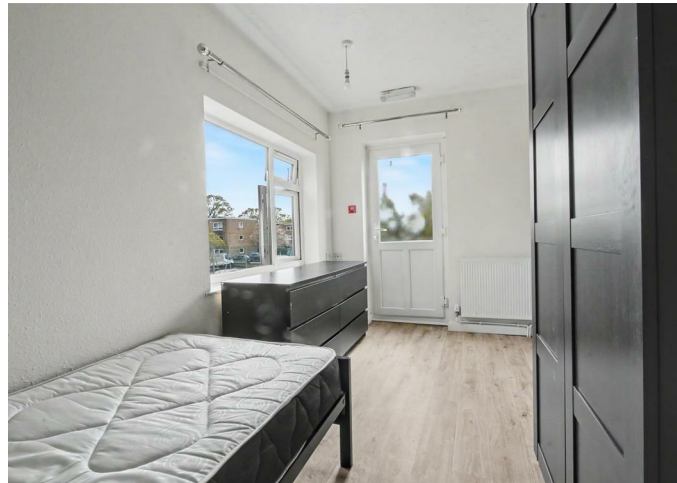
House - Detached

**ROOM 11 111 112**  
**NORTH DENES**  
**ROAD, GREAT**  
**YARMOUTH, NR30**  
**4LN**

Per Month

**£525 Per**

FEATURES



# 0 Bedroom House - Detached located in Great Yarmouth

**\*\*NO DEPOSIT OPTION AVAILABLE\*\***

Inside, you will find a well-appointed double room, complete with a single bed, providing a cosy and inviting space for relaxation. The room is designed to maximise comfort and functionality, perfect for individuals or couples looking for a peaceful retreat.

The property also features a convenient toilet and sink, ensuring that essential amenities are readily available. This thoughtful layout enhances the overall appeal of the home, making it suitable for various lifestyles.

This detached house presents a wonderful opportunity for anyone looking to settle in a welcoming community. With its fully furnished interior and practical amenities, it is ready to become your new home. Do not miss the chance to experience the comfort and convenience this property has to offer.

Call us on


01603 338433

[norwich@thinkproperty.ltd](mailto:norwich@thinkproperty.ltd)

<https://www.thinkproperty.ltd/>

Council Tax Band

**Exempt**

Energy Efficiency Rating		
	Current	Potential
<i>Very energy efficient - lower running costs</i>		
(92 plus) <b>A</b>		
(81-91) <b>B</b>		
(69-80) <b>C</b>		
(55-68) <b>D</b>		
(39-54) <b>E</b>		
(21-38) <b>F</b>		
(1-20) <b>G</b>		
<i>Not energy efficient - higher running costs</i>		
<b>England &amp; Wales</b>		EU Directive 2002/91/EC 

Agents Note: Whilst every care has been taken to prepare these particulars, they are for guidance purposes only. All measurements are approximate and are for general guidance purposes only and whilst every care has been taken to ensure their accuracy, they should not be relied upon and potential buyers are advised to recheck the measurements.

